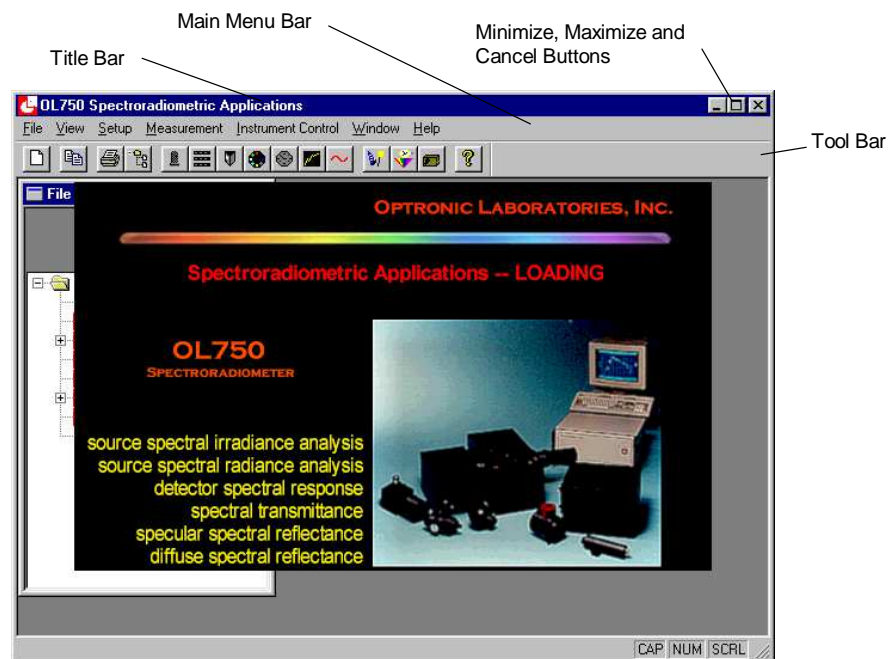


Gooch & Housego

Application software provided for all OL Series 750 Spectroradiometric Measurement Systems will be the latest version of Gooch and Housego's Windows 2000/XP compatible software. The DOS (optoLAB™) version will continue to be supported from an application standpoint, but the new Windows software will be standard with any new OL Series 750 Spectroradiometer.

Windows™ 2000/XP Compatible Software for the OL Series 750 Spectroradiometer

The new Windows-based application software maintains the accuracy and resilience of our industry-standard DOS offering, while taking advantage of the powerful 32-bit features native to other common Windows applications. For current users of our DOS version, this means simple migration to a computing environment with the "look and feel" of other Windows-based applications used regularly. For new users, it is simply "plug and play."



Contact: orlandosales@goochandhousego.com

www.GHinstruments.com

As part of our policy of continuous product improvement, we reserve the right to change specifications at any time



What You Can Expect

The OL 750 Windows Application Software combines data reduction and utility programs with optional application software for a completely integrated operating system. The software operates on any Microsoft Windows 2000/XP compatible computer (contact your local representative for minimum system requirements). The OL 750 Windows Application Software utilizes full mouse and/or keyboard control for menu selection.

Seven menu selections are available from the menu bar.

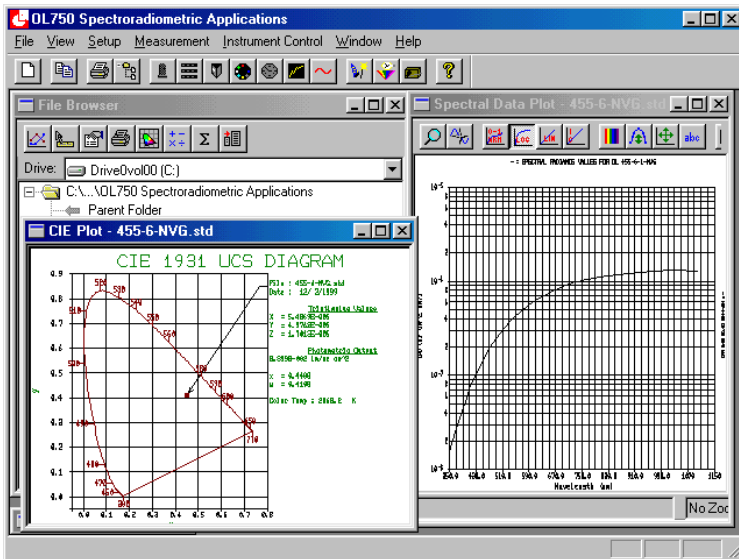
- **File Menu:** The File Menu allows the user to create data files, combine data files and print the system defaults. Once a file is created, the user is capable of performing powerful spectral data reduction including graphing, interpolation, integration, and photometric and colorimetric calculations. Data files can be displayed, edited, printed and stored. A data file arithmetic feature allows the user to define an equation that incorporates multiple data files and/or constants.
- **View Menu:** The View Menu allows the user to customize the display by activating or deactivating the Tool Bar or Status Bar.
- **Setup Menu:** The Setup Menu enables the user to set or change the computer configuration and instrument parameters (i.e. signal detection system, blocking filter trip points, grating, detector and lock-in amplifier setup, signal sampling rate and signal response time).
- **Measurement Menu:** Each of the seven optional measurement application software packages is integrated into the OL 750 Windows Application Software. Thus, the user can quickly switch from one measurement application to another or switch from a data reduction routine to a utility routine within the same program. The application software packages are designated as:

<u>Designation</u>	<u>Description</u>
OL 750-422	Radiometer/Photometer
OL 750-423	Source Spectral Analysis
OL 750-424	Spectral Transmittance
OL 750-425	Detector Spectral Response
OL 750-427	Diffuse Spectral Reflectance
OL 750-428	Detector Quantum Efficiency
OL 750-429	Specular Spectral Reflectance

- **Instrument Control Menu:** Measurements can be performed manually. Under manual instrument control, the user can select the wavelength, chopper frequency, PMT voltage, gain settling, signal integration time and filter position including open and shutter positions. The current instrument settings are displayed along with the current signal reading.
- **Window Menu:** The Window Menu allows the user to activate a New File Browser and select a horizontal or vertical display of OL 750 application windows so that all windows are visible on the desktop. This is a very powerful feature that allows multiple windows to be opened at the same time for data comparison and plotting.
- **Help Menu:** The Help Menu provides the user with copyright information, version number and information on contacting the factory.

Key Features and Benefits

- ☞ **Highly Intuitive:** Powerful wizards are built into the software guiding the user easily through complex setup regimes such as detector and grating setups.
- ☞ **Look and Feel:** Because the software is Windows-compatible, it has the familiar look and feel of other Windows-based applications. Open windows can be minimized, resized, opened multiple times etc. This gives the user the luxury of configuring his measurement environment to suit his individual styles and need.
- ☞ **Multitasking:** Allows the user more productivity by providing the capabilities to observe and manipulate multiple data files even while simultaneously scanning new data. Once a scan routine has been initiated, the user can minimize the application on screen and work concurrently with any other Windows application.
- ☞ **Smart File Browser:** Opens directly after application is booted allowing easy access to useful Optronic Laboratories data manipulation routines. The Smart Browser also sorts data relevant to standards, calibration and measurements into “virtual folders,” eliminating the tedious searches for desired file formats in directory hierarchies.
- ☞ **It Pays Attention:** The Smart Browser pays attention to the file you are clicking and protects your data by changing the toolbar to reflect and access routines appropriate to that data file only.
- ☞ **Printer Compatibility:** Unlike the DOS version, which had limited printer options, the Windows-based software can print to any Windows printer including color printers. This will give the user the flexibility to create dramatically visual renderings of plotted data.
- ☞ **One Button Access:** Various setups are easy with built in wizards and drop-down lists. Unlike DOS programs that sometimes overload the user with information, the wizard guides the user through setups, providing simple explanations for individual phases of the setup routine. Or the user can select “Expert Setup” to customize routines and bypass the wizard hierarchy.
- ☞ **File Math:** Gives the user power to perform a myriad of mathematical operations on files such as adding files together, multiplying files by other files or by constants, etc.
- ☞ **Combine Files:** Enables the user to easily scale and combine two files with interactive cursor dragging. Simultaneously viewing both files and their combined output is simple, intuitive and visually coherent.



Smart File Browser enables user to customize the computing environment, opening multiple windows for data comparison & plotting.

Browser sorts & stores data relevant to standards, calibration and measurements into "virtual folders," eliminating the need for tedious searches in directory hierarchies.

Browser pays attention to the file you are accessing. It protects your data by changing the toolbar to reflect and access routines appropriate to that data file only.


Of Special Note:

OL Series 750 Windows Application Software Hardware Modification Caveat

As Digital Signal Processing (DSP) and microelectronics in general have improved, Gooch & Housego, with the goal of optimizing system performance, has kept pace with these advancements by integrating more of these leading-edge technologies into its measurement systems. Ideally, our Windows application software would run seamlessly in every OL 750 Series system shipped. However, hardware incompatibilities, albeit improvements, mean that some existing OL 750 Systems may require various levels of hardware/firmware upgrade in order to be compatible with the new Windows software.

Some DSP based systems will require hardware and/or firmware upgrade. These include systems shipped prior to 3/97 with the current software versions 3.0 to 4.10.

Systems that are shipped March 1997 or later, running software version 4.20 are fully compatible.¹

 Please contact the factory at 1-800-899-3171 ext. 225 for a complete software compatibility analysis for your OL Series 750 System. Have the serial number of the OL750-C Controller as well as the serial number of the OL 750 Series Monochromator available when you call.

¹ Note if the system shipped after 3/97 is equipped with an OL 740-75MA Reflectance Attachment, please contact the factory for upgrade details.

